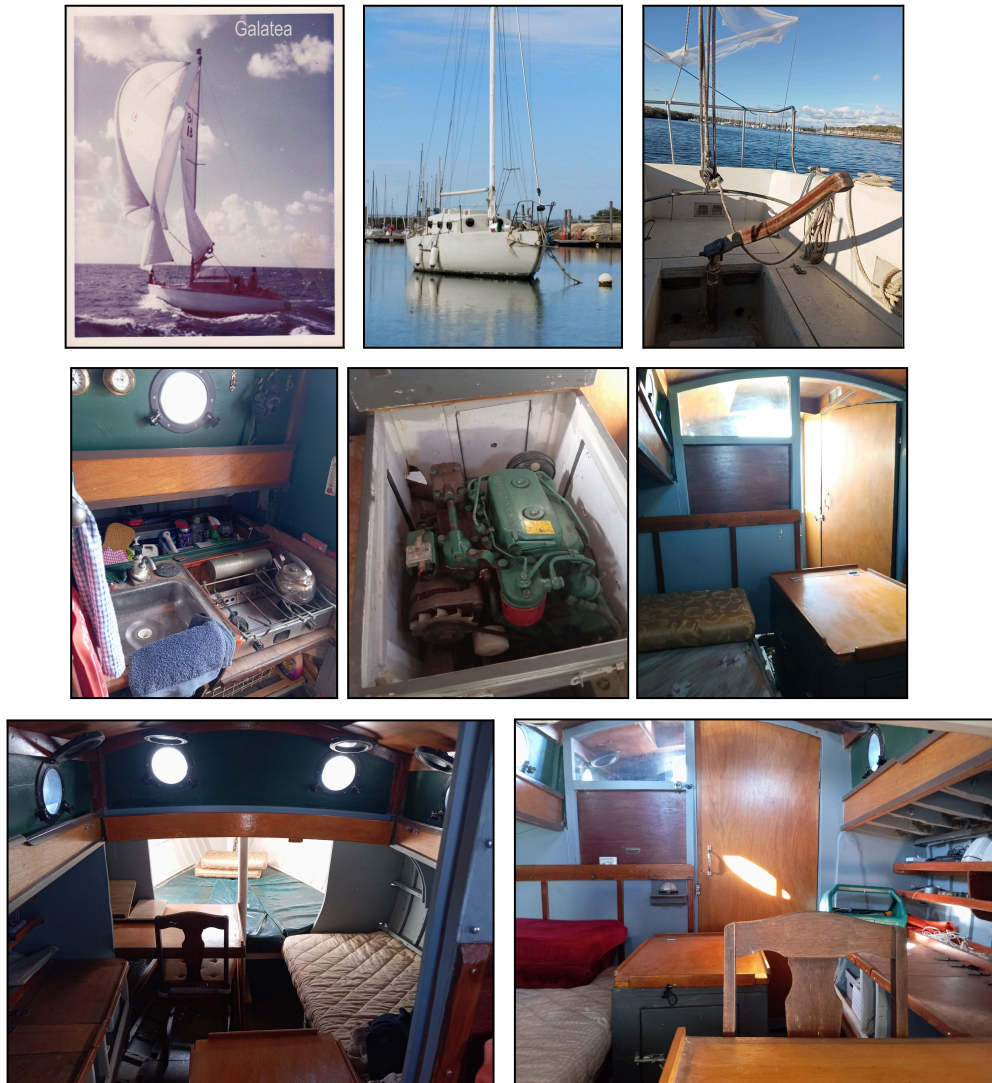


Timber sloop "Galatea"



Galatea, 29 foot cedar hull, glassed all over, built locally in the 1960s to an Illingworth design. Draws six feet, self-draining cockpit, opening portholes, metho stove, plumbed ready for toilet. Has spacious peak bunk plus starboard bunk and is always completely dry and comfy inside. Has 18HP Volvo Penta & 30 litre tank; not currently connected to fuel or electrics but in good order and turns easily by hand. Only issue is the mast, which needs repair.

Asking \$2,500 ono
Gary: 0434 980 873