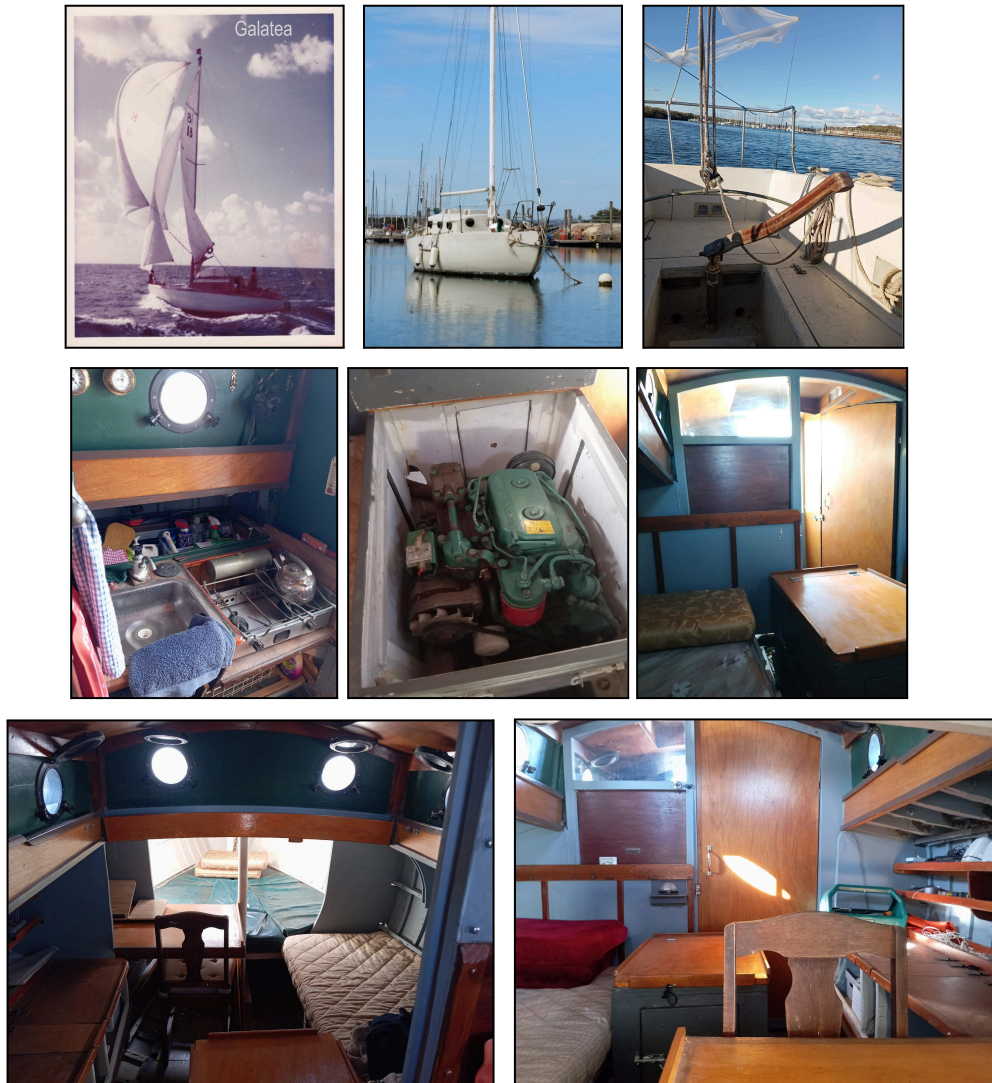


## Timber sloop "Galatea"



Galatea, 29 foot cedar hull, glassed all over, built locally in the 1960s to an Illingworth design. Has opening portholes, metho stove & spacious peak & starboard bunks and is always completely dry and comfy inside. Has 18HP Volvo Penta & 30 litre tank; not connected but in good order and turns easily by hand. Only issue is the mast, which needs repair. Has a HIN.

Asking \$5K ono  
All offers considered  
Gary: 0434 980 873